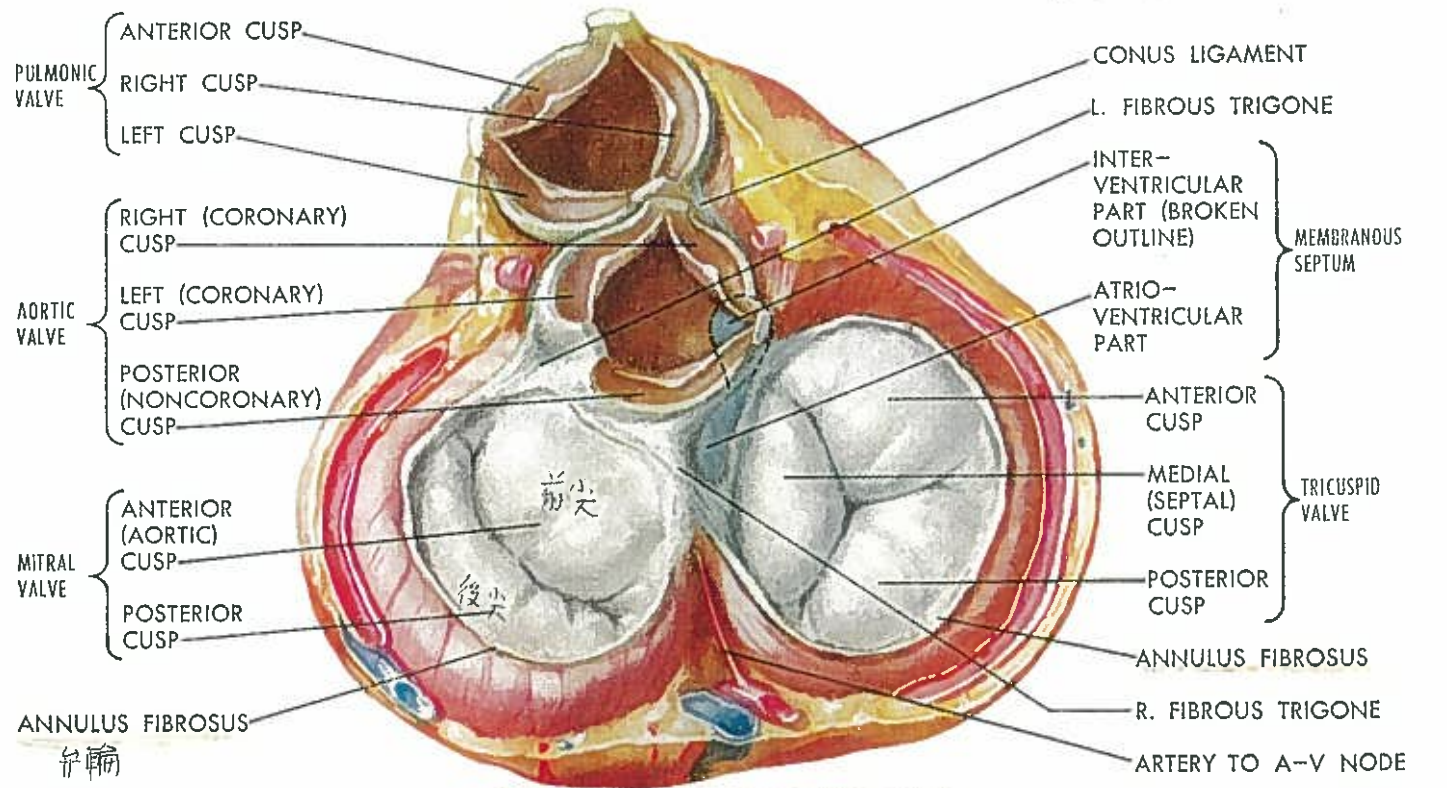


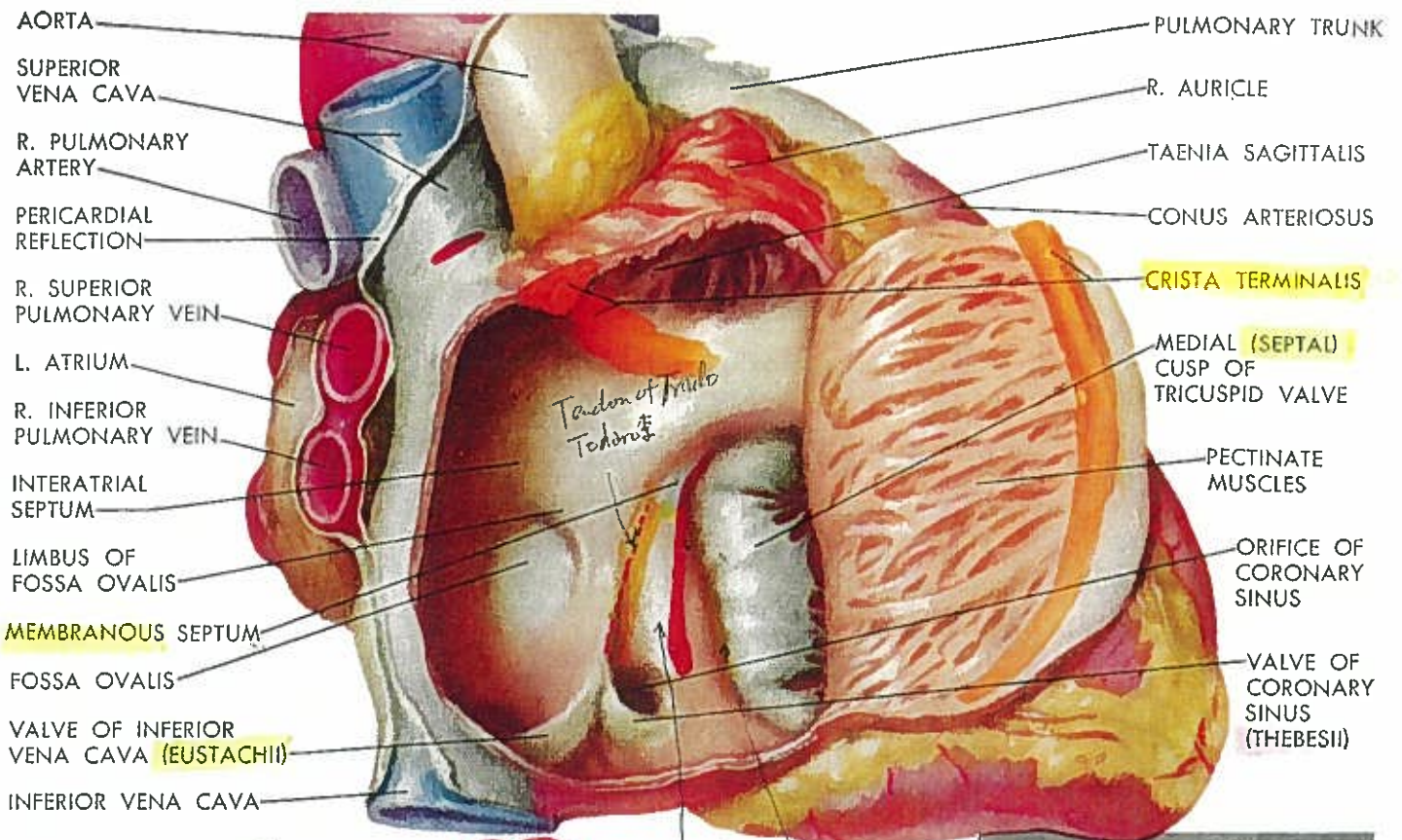
THE HEART IN DIASTOLE: VIEWED FROM BASE WITH ATRIA REMOVED

P. Netter M.D.
© CIBA

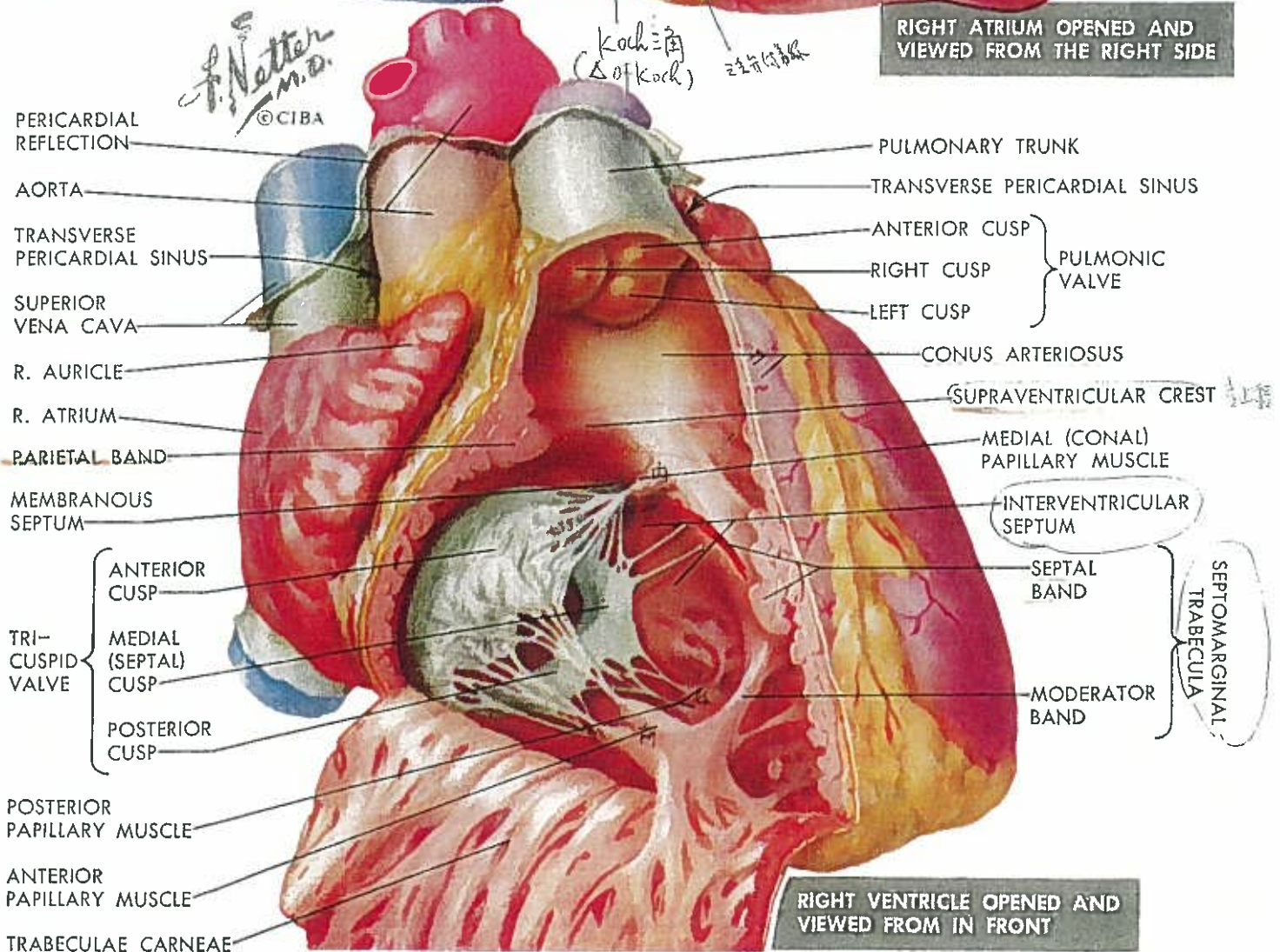


THE HEART IN SYSTOLE: VIEWED FROM BASE WITH ATRIA REMOVED

心輪



RIGHT ATRIUM OPENED AND VIEWED FROM THE RIGHT SIDE



RIGHT VENTRICLE OPENED AND VIEWED FROM IN FRONT

