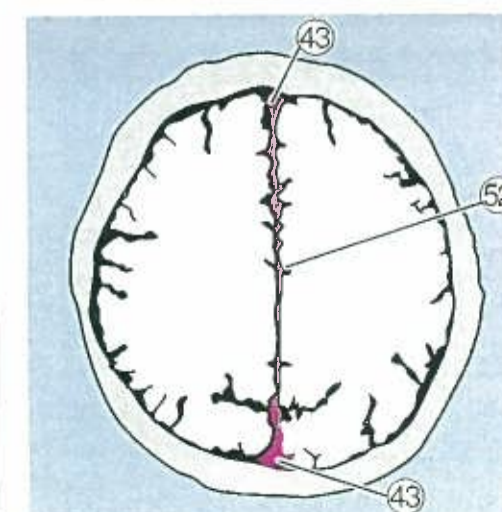
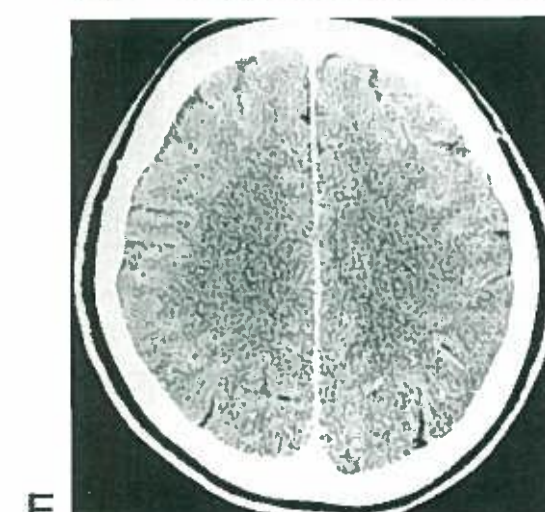
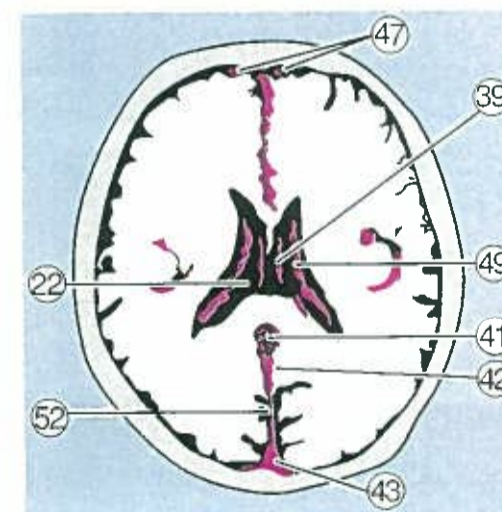
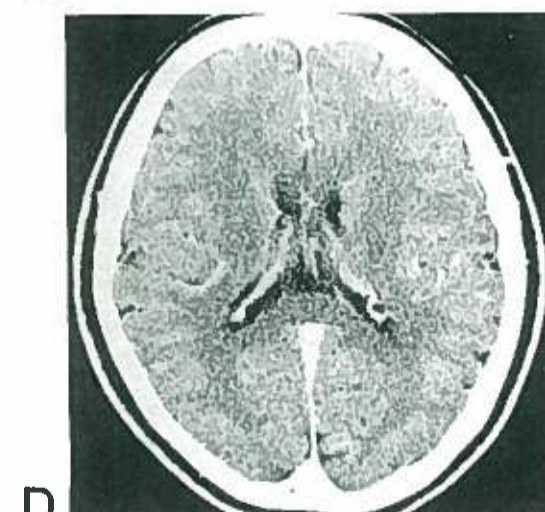
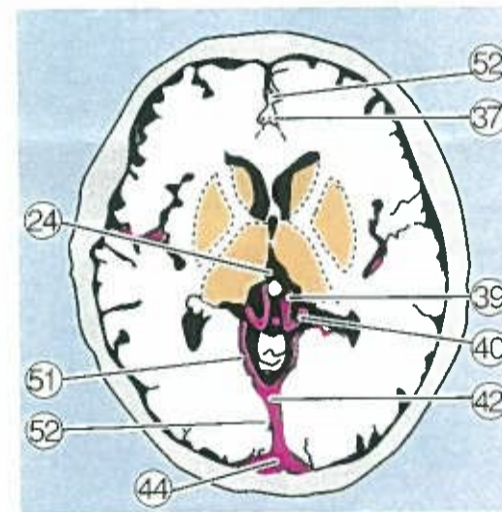
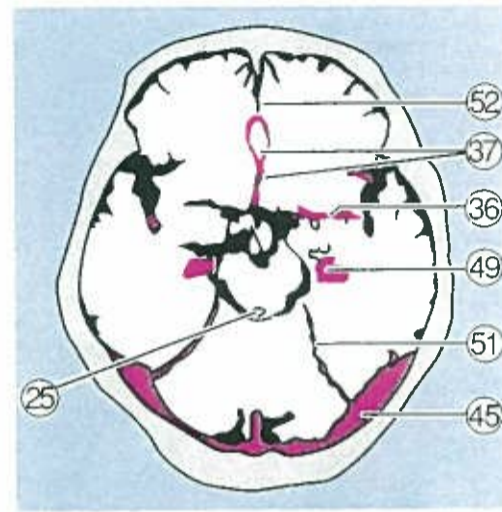
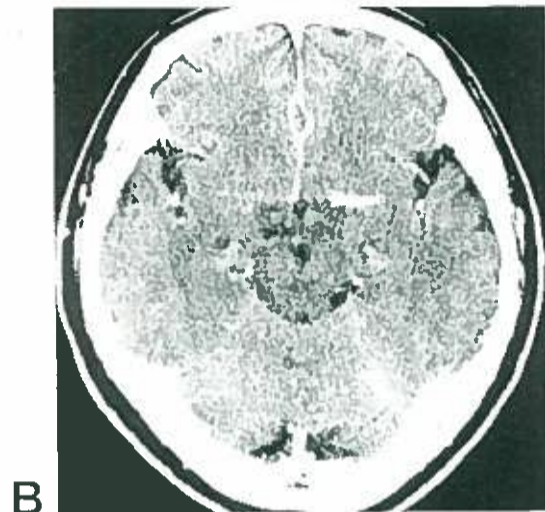
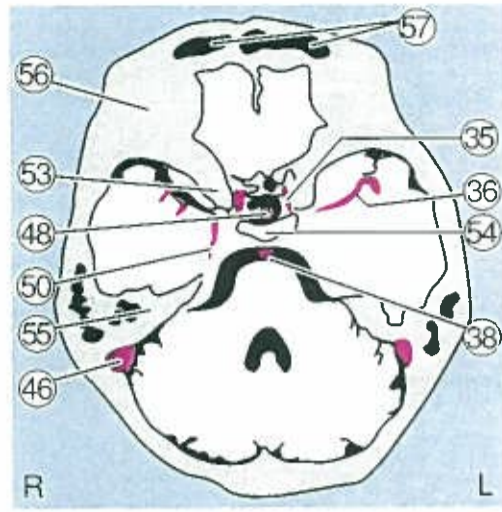
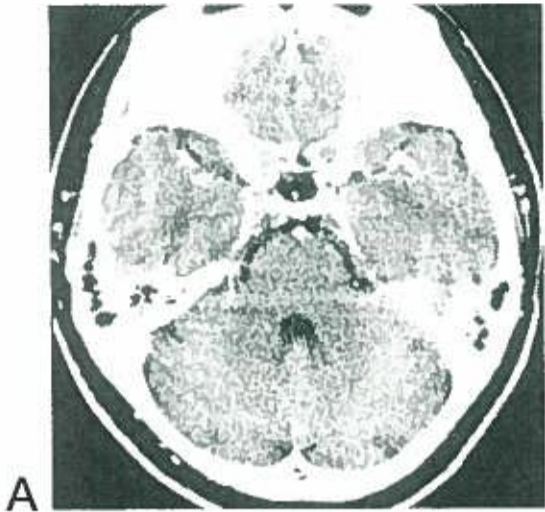


頭部CT正常造影像

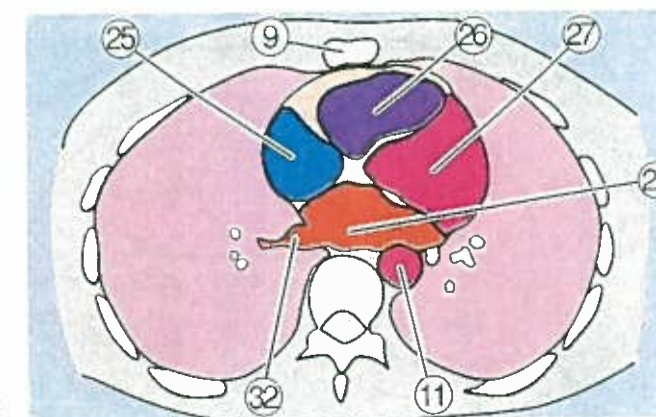
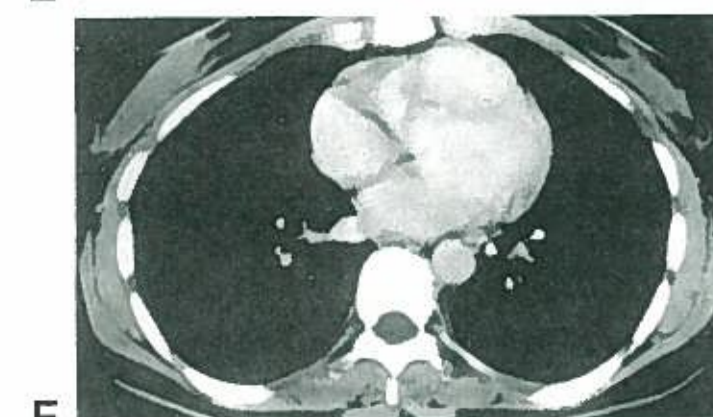
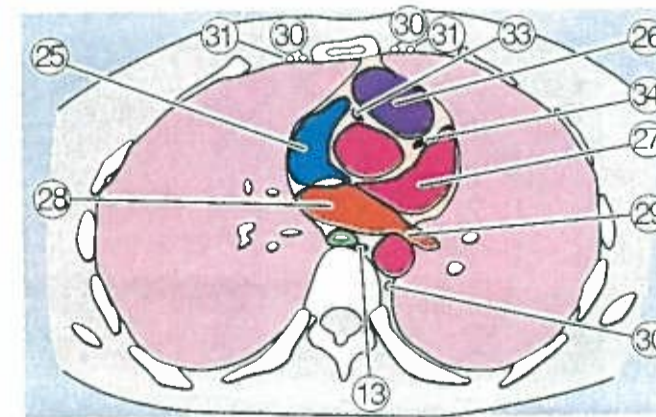
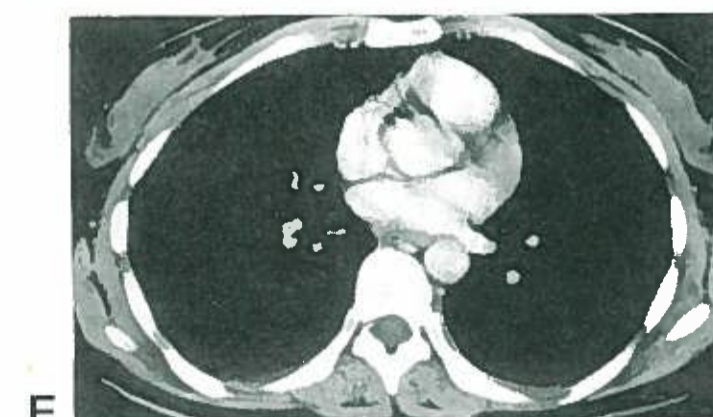
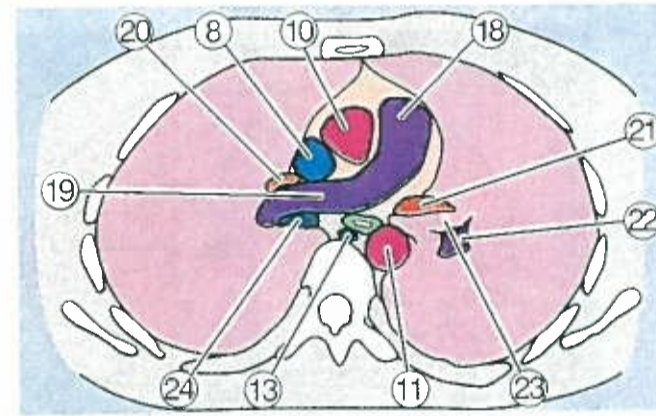
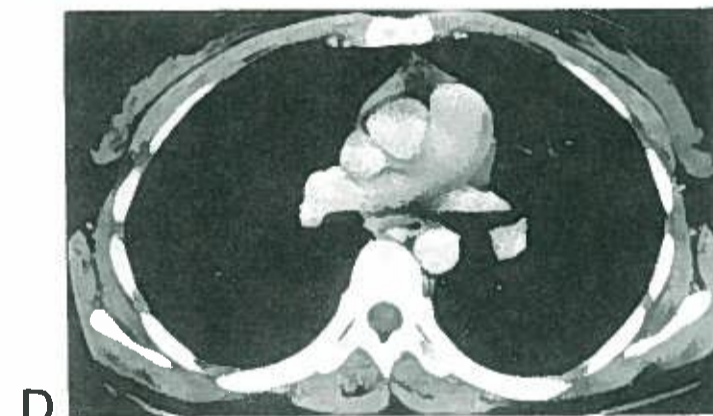
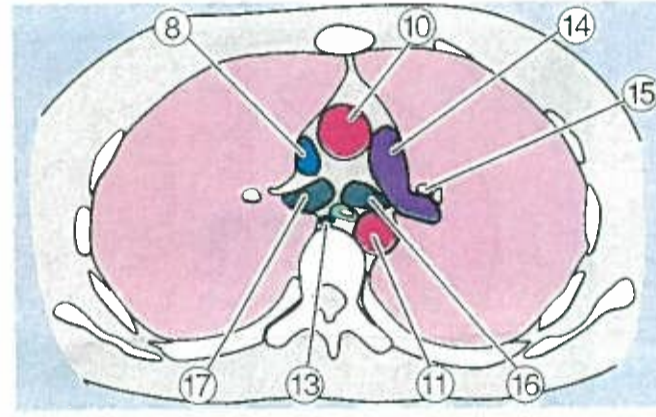
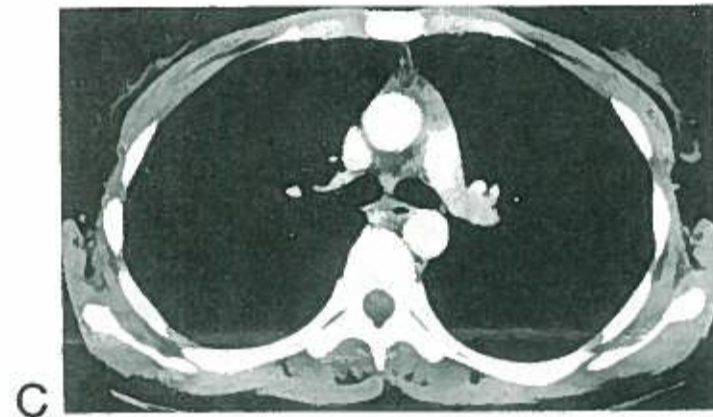
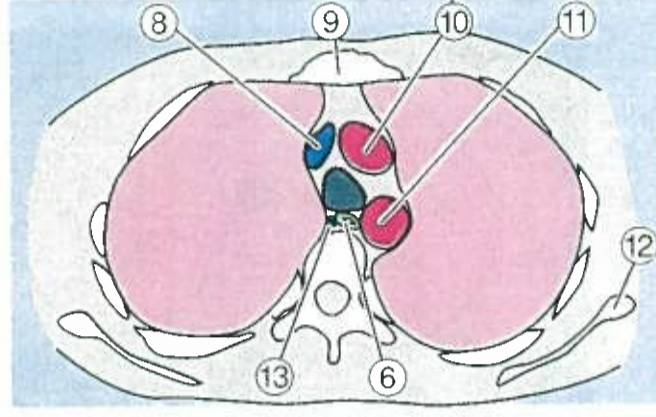
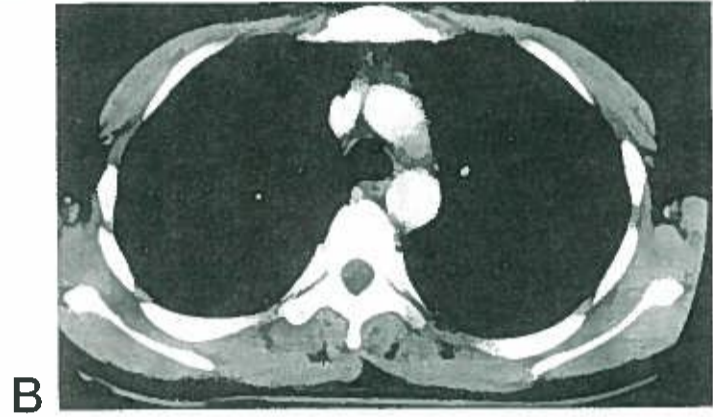
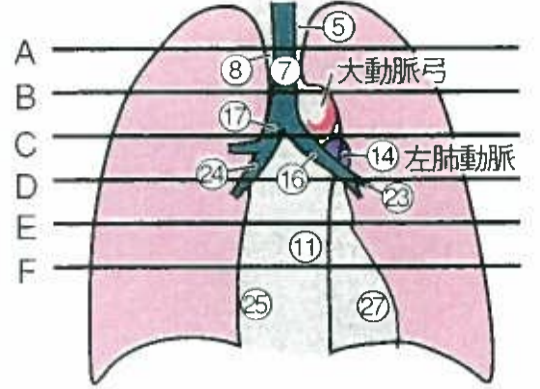
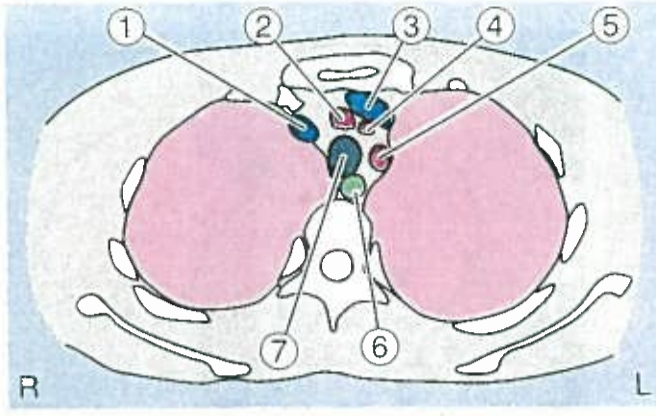
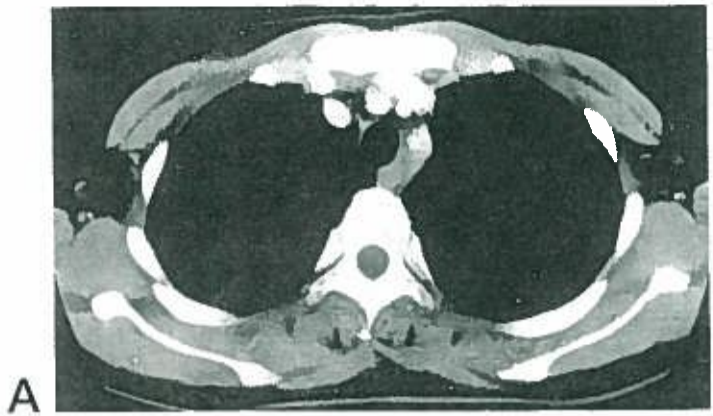


- ②4 第3脳室
- ②5 中脳水道
- ②6 第4脳室
- ②7 鞍上槽
- ②8 橋前槽
- ②9 小脳橋角部
- ③0 脚間槽
- ③1 迂回槽
- ③2 大脳縦裂
- ③3 外側溝(シルビウス裂)
- ③4 中心溝
- ③5 内頸動脈
- ③6 中大脳動脈
- ③7 前大脳動脈
- ③8 脳底動脈
- ③9 内大脳静脈
- ④0 脳底静脈
- ④1 (ガレン)大大脳静脈
- ④2 直静脈洞
- ④3 上矢状静脈洞
- ④4 静脈洞交会
- ④5 横静脈洞
- ④6 S状静脈洞
- ④7 上大脳静脈
- ④8 下垂体柄
- ④9 脈絡叢
- ⑤0 小脳天幕の前錐体床ヒダ
- ⑤1 小脳天幕自由縁
- ⑤2 大脳鎌
- ⑤3 前床突起
- ⑤4 鞍背
- ⑤5 側頭骨錐体部
- ⑤6 眼窩上壁
- ⑤7 前頭洞

新潟大学歯学部放射線科講師 岡本浩一郎

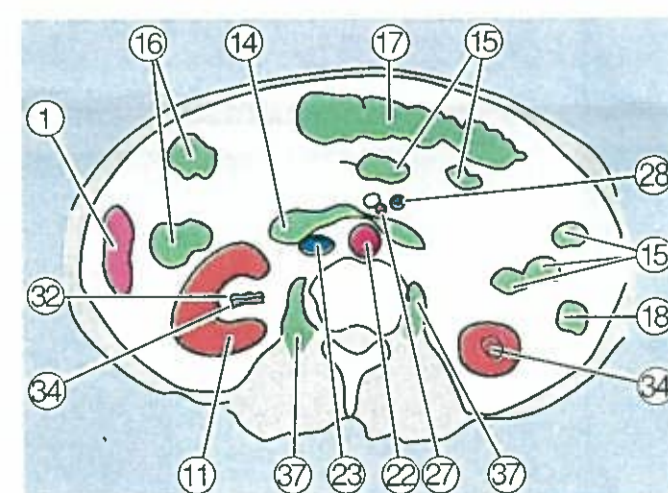
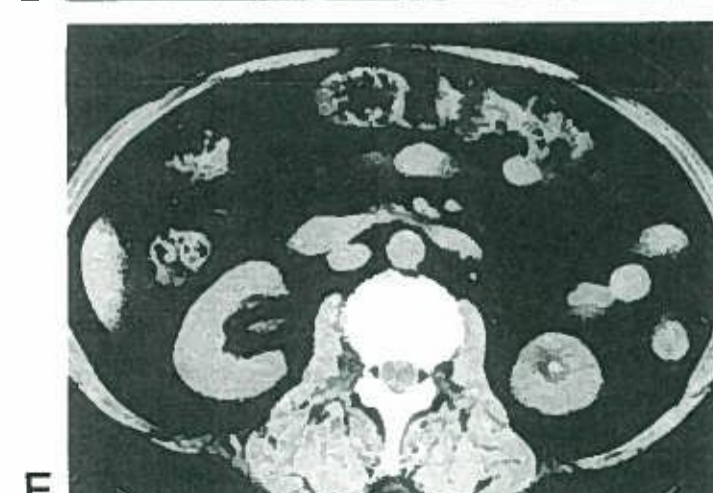
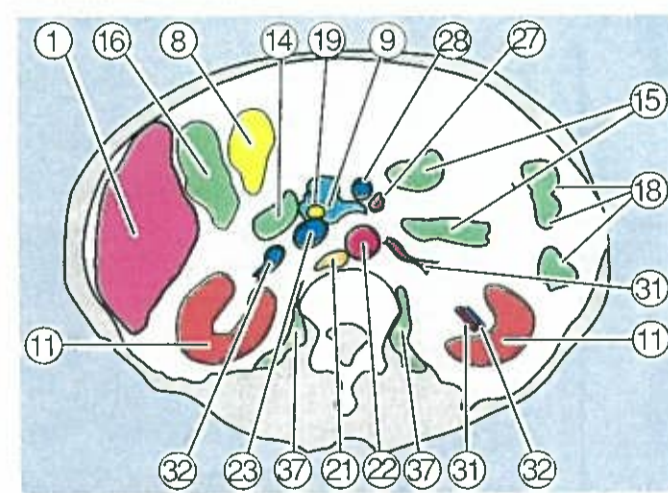
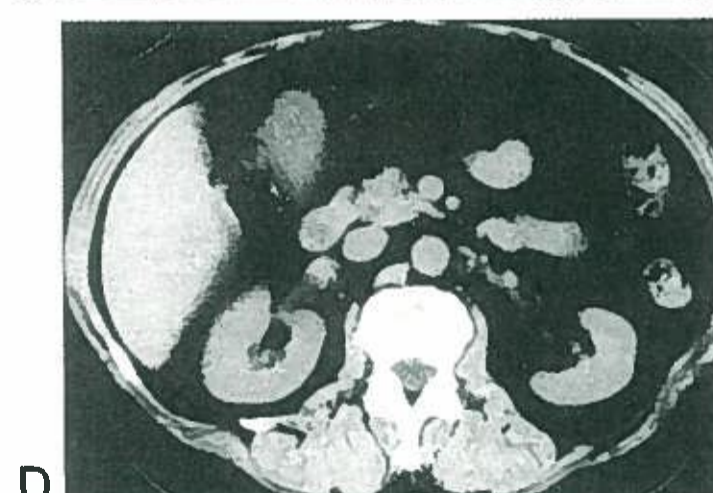
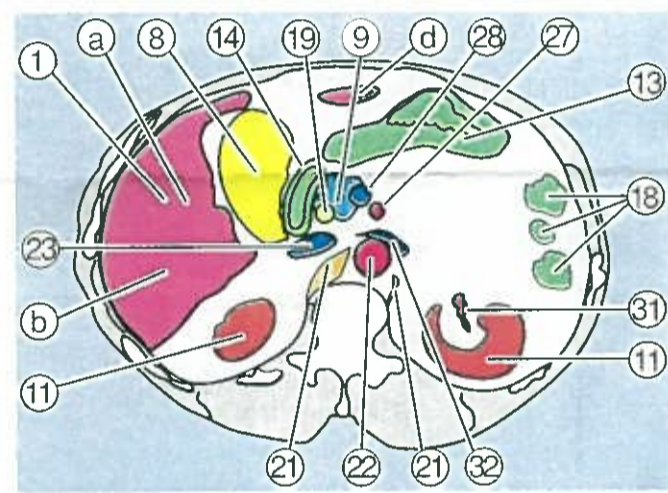
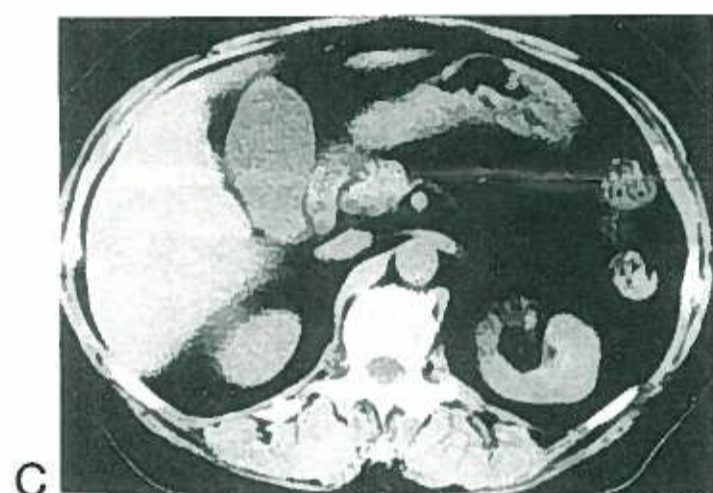
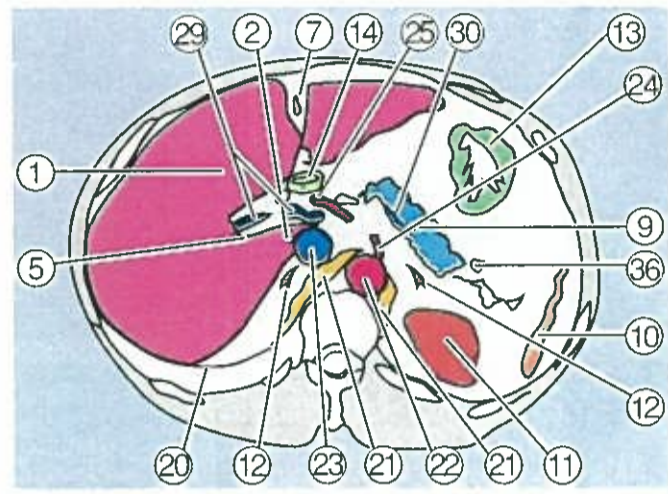
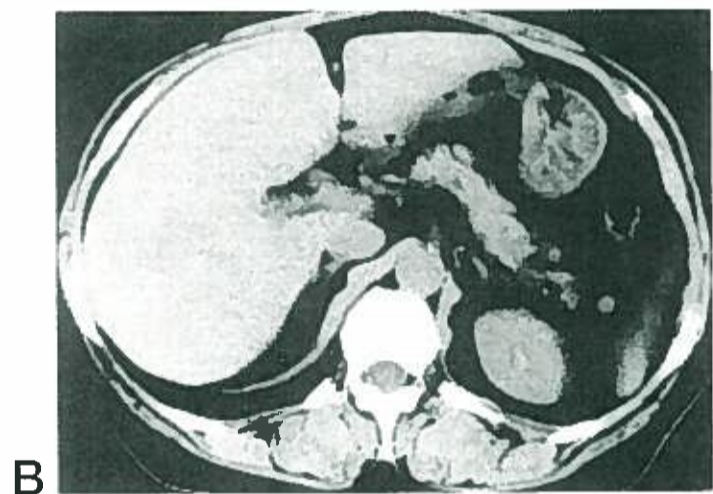
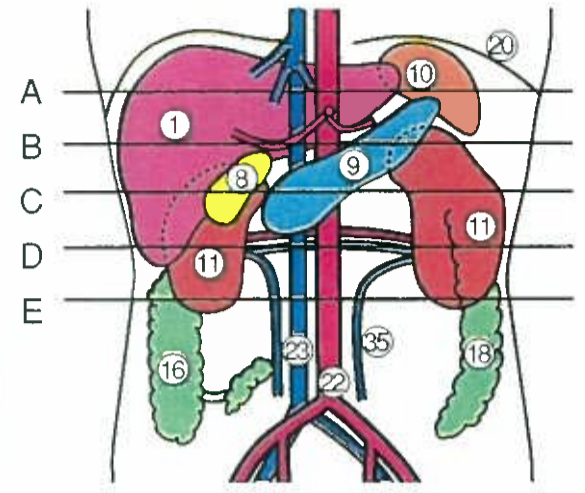
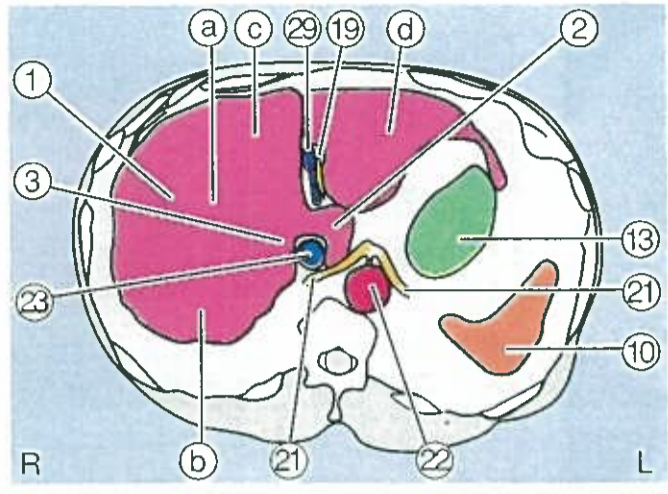
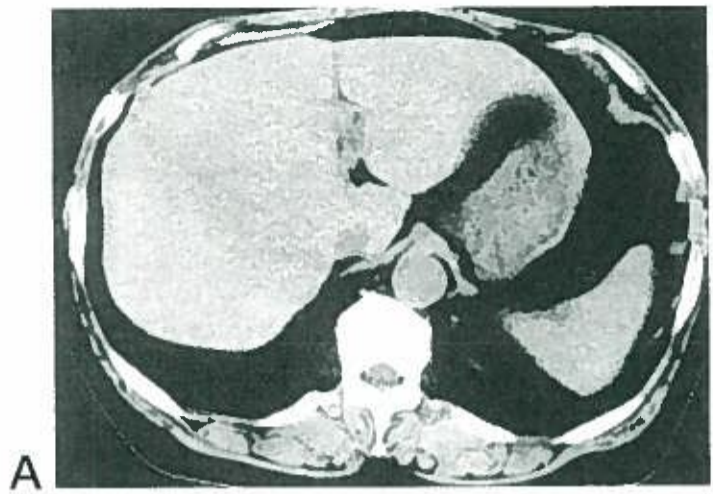
五十嵐俊彦
 長岡中央総合病院 病理部
 〒940-8653 長岡市川崎町20-41番地
 TEL 0258-35-3759番
 FAX 0258-35-9784番
 E-mail ikarashi@nagachu.jp

胸部CT正常造影像【縱隔条件】



- ① 右腕頭静脈
- ② 腕頭動脈
- ③ 左腕頭静脈
- ④ 左總頸動脈
- ⑤ 左鎖骨下動脈
- ⑥ 食道
- ⑦ 氣管
- ⑧ 上大静脈
- ⑨ 胸骨
- ⑩ 上行大動脈
- ⑪ 下行大動脈
- ⑫ 肩甲骨
- ⑬ 奇静脈
- ⑭ 左肺動脈
- ⑮ 左上肺静脈
- ⑯ 左主氣管支
- ⑰ 右主氣管支
- ⑱ 肺動脈本幹
- ⑲ 右肺動脈
- ⑳ 右上肺静脈
- ㉑ 左上肺静脈
- ㉒ 左下肺動脈
- ㉓ 左上幹氣管支
- ㉔ 中間氣管支幹
- ㉕ 右房
- ㉖ 右室
- ㉗ 左室
- ㉘ 左房
- ㉙ 左下肺静脈
- ㉚ 内胸静脈
- ㉛ 内胸動脈
- ㉜ 右下肺静脈
- ㉝ 右冠動脈
- ㉞ 左冠動脈前下行枝

腹部CT正常单纯像



- ① 肝臟
 - ①a 右前区域
 - ①b 右後区域
 - ①c 左內側區域
 - ①d 左外側區域
- ② 尾狀葉
- ③ 右肝靜脈
- ④ 門脈枝
- ⑤ 裂溝
- ⑥ UP(umbilical portion)
- ⑦ 肝門索
- ⑧ 膽囊
- ⑨ 脾臟
- ⑩ 脾臟
- ⑪ 腎臟
- ⑫ 副腎
- ⑬ 胃
- ⑭ 十二指腸
- ⑮ 小腸
- ⑯ 上行結腸
- ⑰ 橫行結腸