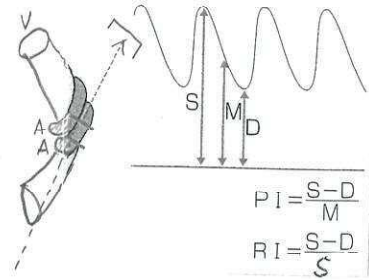
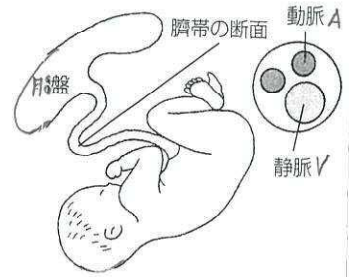
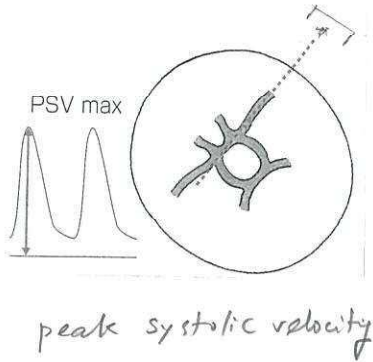
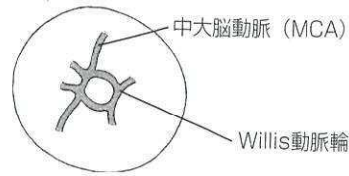
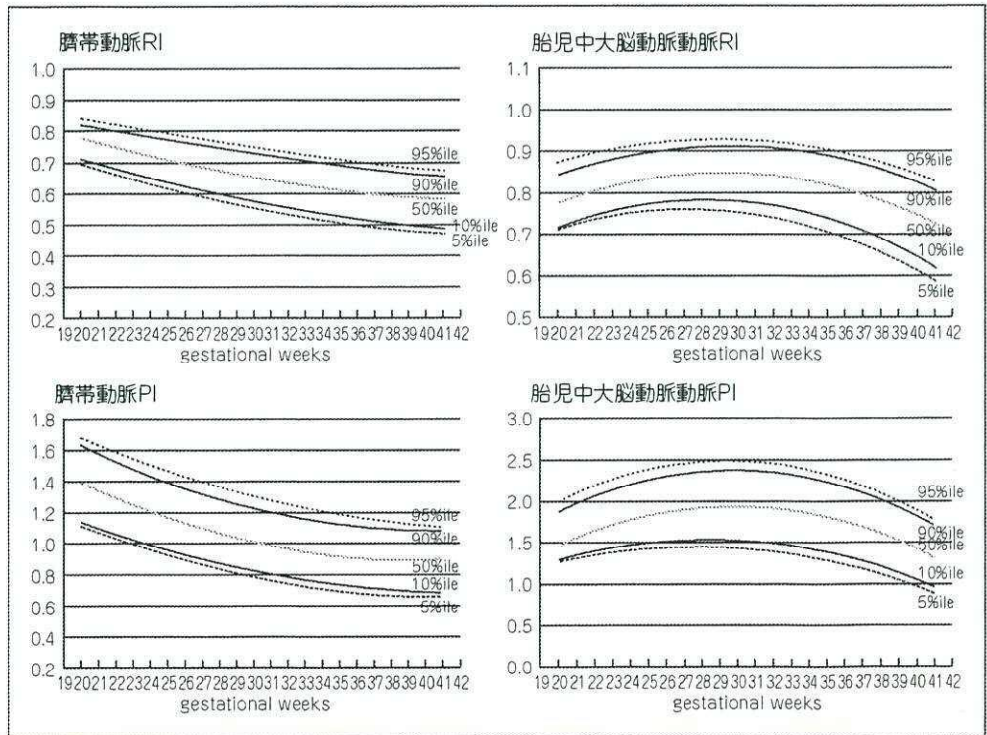


胎児血流測定

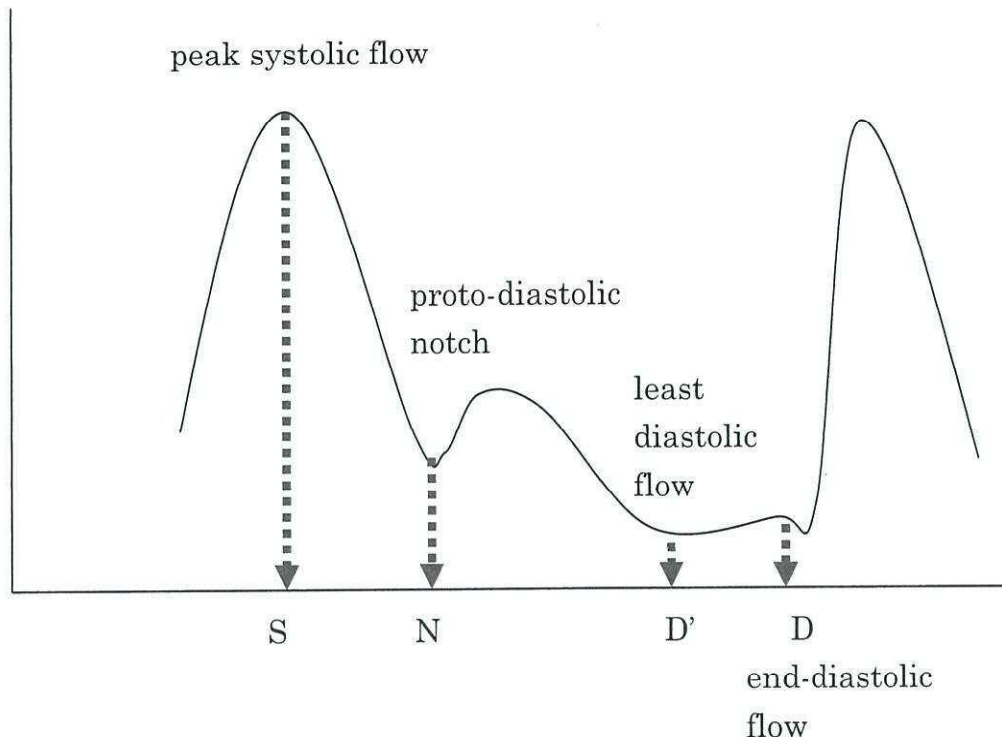


pulsatility index
resistance index



臍帯動脈および胎児中大脳動脈の RI, PI の基準値

Doppler velocimetry indices



S/D systolic/diastolic ratio

S/N systolic/proto-diastolic ratio

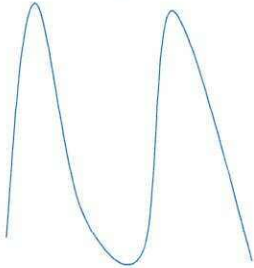
RI resistance index $= (S-D)/S$ or $(S-D')/S$

PI pulsatility index $= (S-D)/\text{mean}$ or $(S-D')/\text{mean}$

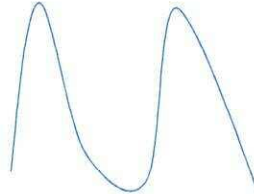
パルスドップラー波形

1. 中大脳動脈

正常波形



異常波形

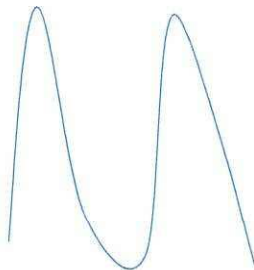


Brain sparing effect 拡張期血流増大

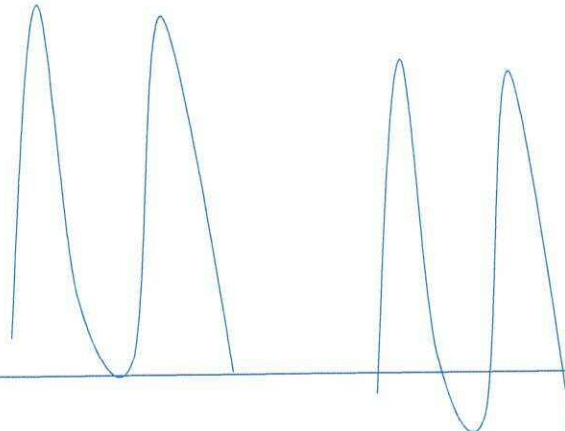
注意、正常妊娠末期でもありうる

2. 臍帯動脈

正常波形



異常波形

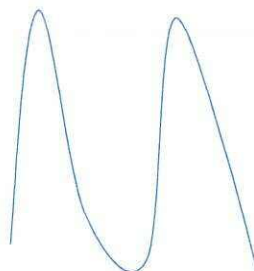


拡張期途絶 RI=1

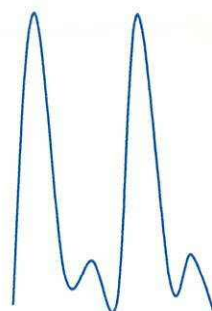
逆流 $R < 0$

3. 子宮動脈

正常波形



異常波形



収縮期末期ノッチ
拡張期血流減退